



TECHNOLOGY UPDATE ON LTE – FDD AND TDD

TELEBRIEFING, SEPTEMBER 2, 2010

SAFE HARBOR

THIS PRESENTATION CONTAINS FORWARD LOOKING STATEMENTS.

SUCH STATEMENTS ARE BASED ON OUR CURRENT EXPECTATIONS AND ARE SUBJECT TO CERTAIN RISKS AND UNCERTAINTIES THAT COULD NEGATIVELY AFFECT OUR BUSINESS.

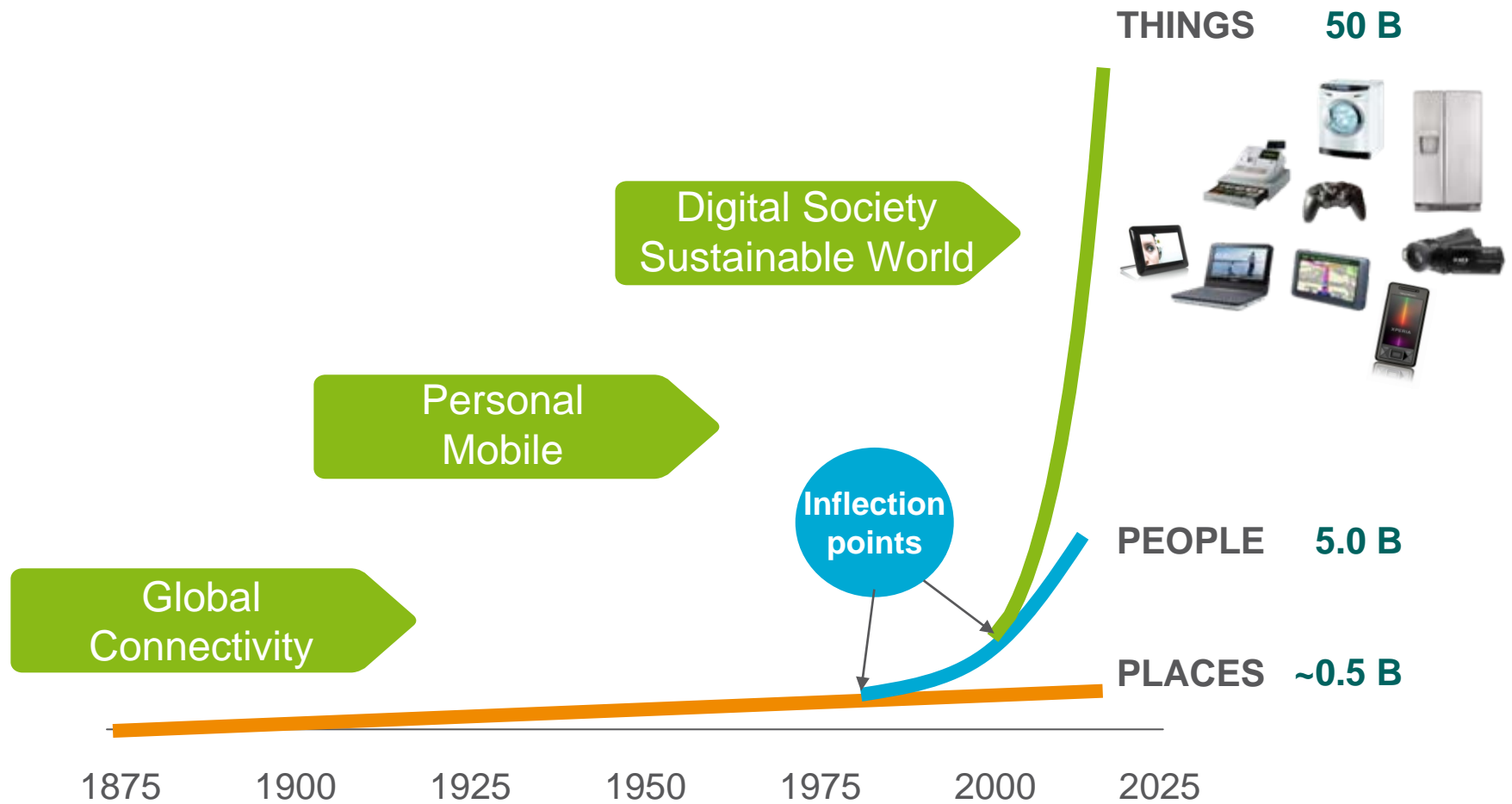
PLEASE READ OUR EARNINGS REPORTS AND OUR MOST RECENT ANNUAL REPORT FOR A BETTER UNDERSTANDING OF THESE RISKS AND UNCERTAINTIES.



TECHNOLOGY UPDATE ON LTE – FDD AND TDD

Erik Ekudden
VP & Head of Technology Strategies

INFLECTION POINTS DRIVING OUR BUSINESS



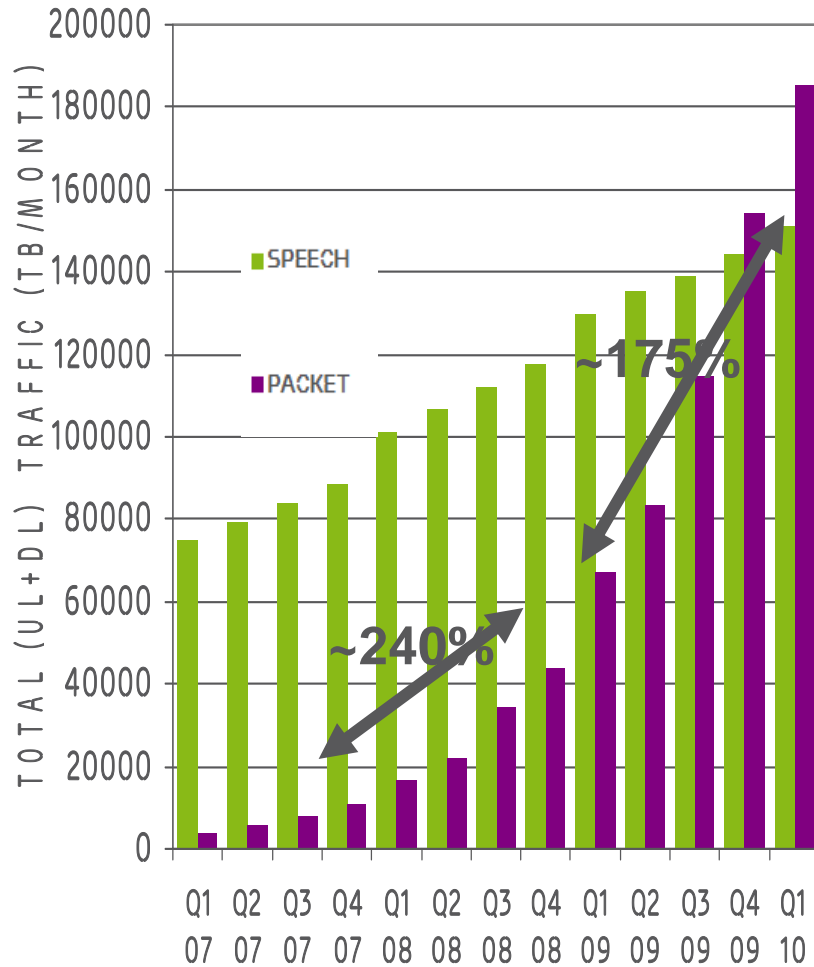
Source: Ericsson

MEASURED VOICE AND DATA TRAFFIC



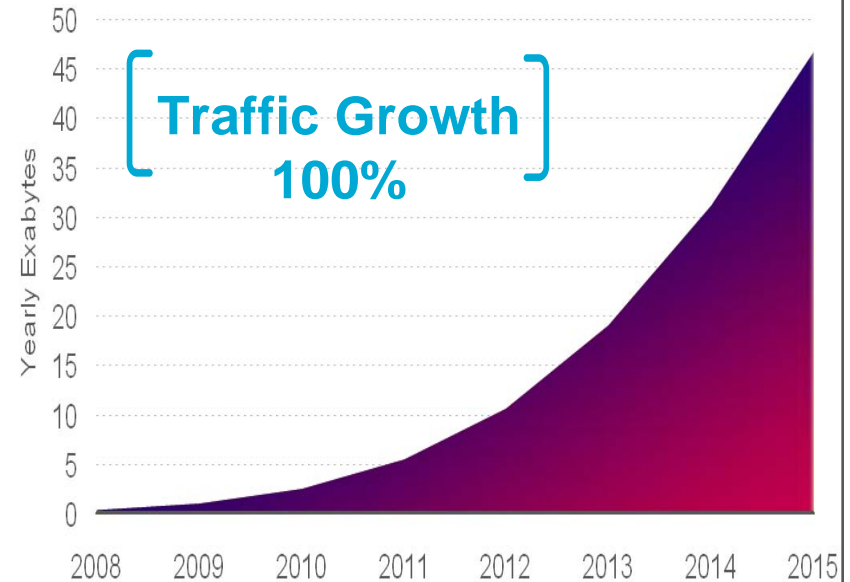
KILLER APP : CONNECTED MOBILITY 24/7

Measured Data Updated
Q1 2010



MOBILE DATA TRAFFIC FORECAST

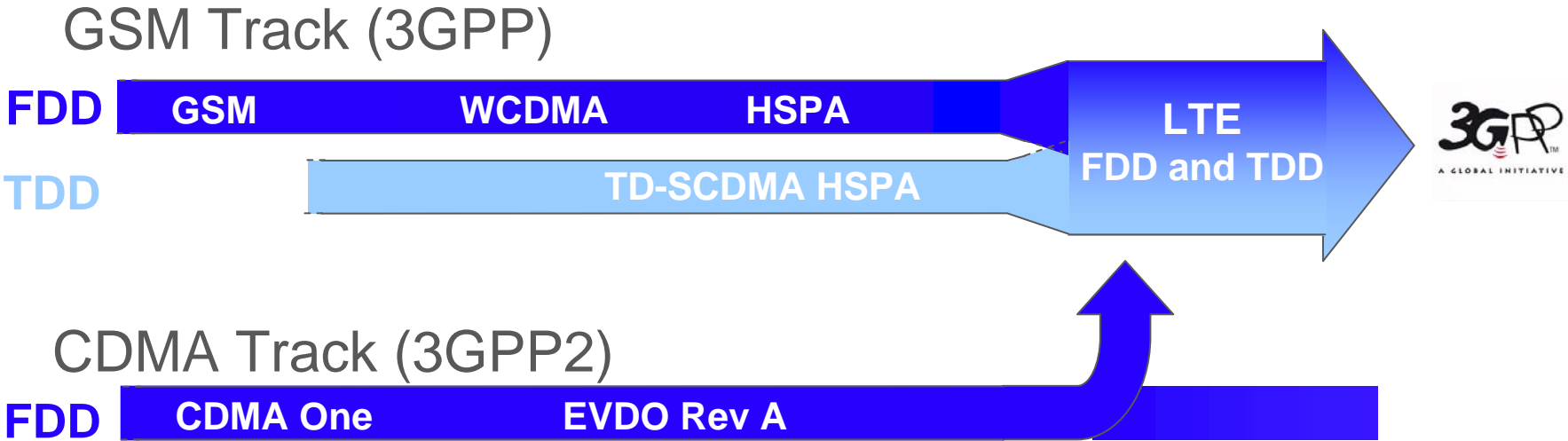
SUBSCRIBER DATA TRAFFIC IN MOBILE ACCESS NETWORKS



(DVB-H, Mobile WiMax, M2M and WiFi traffic not included)

COMMON LTE EVOLUTION – FDD AND TDD

ALIGNMENT FOR WCDMA/HSPA, TD-SCDMA (CHINA) AND CDMA

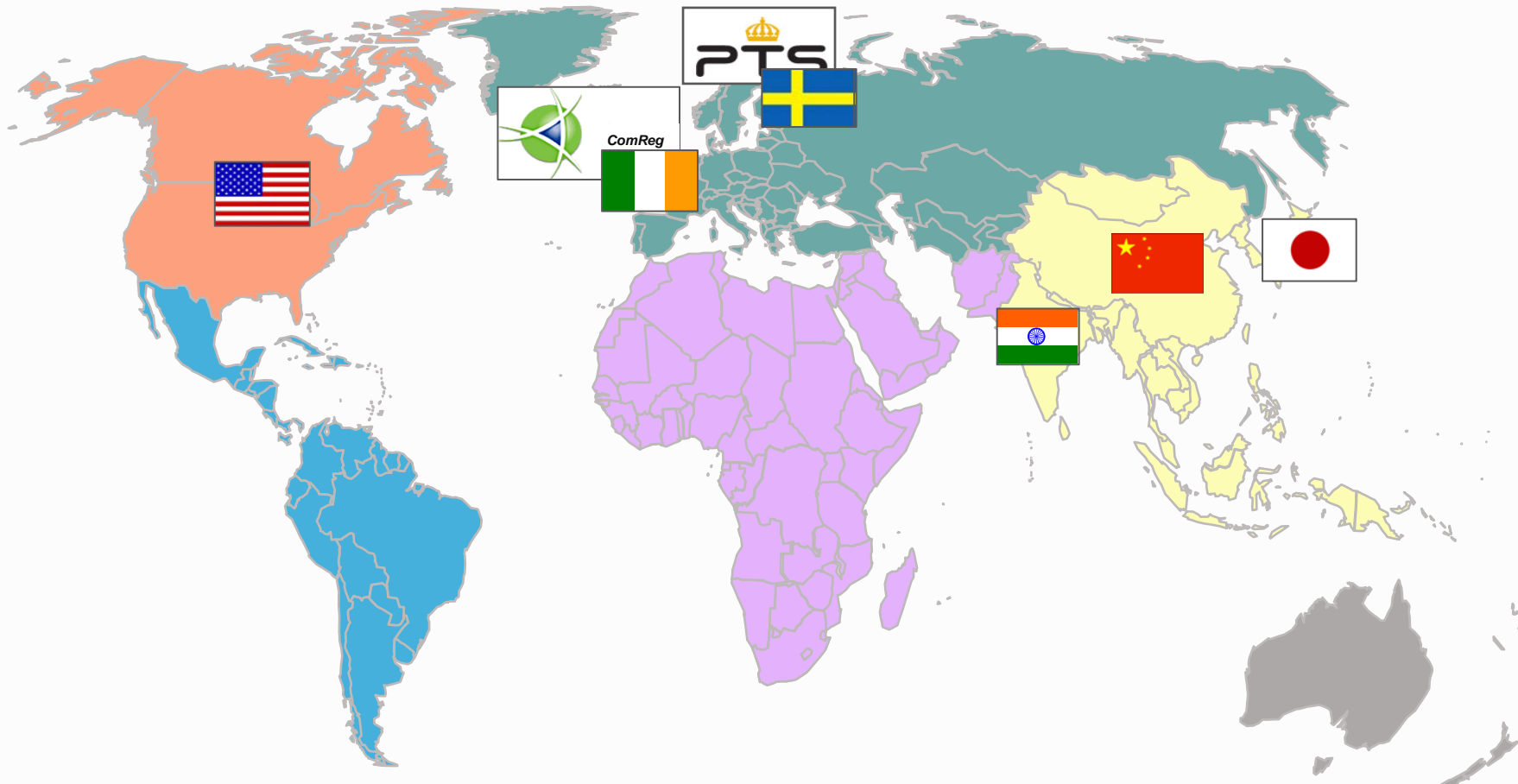


Ericsson is the world leader in open communication standardization and the prime driver for LTE in 3GPP. Ericsson expects to hold 25% of the LTE patents

LTE the Global standard for Next Generation (4G)

LTE GLOBALLY ESTABLISHED

LTE FDD AND TD-LTE



LTE FDD GLOBALLY ESTABLISHED. TD-LTE MOMENTUM STRONG IN ASIA AND GROWING IN NORTH AMERICA AND EUROPE

GLOBALLY ALIGNED BANDS FOR TD-LTE

The 2.6 GHz "IMT Extension band" with unpaired part in 2570-2620 MHz

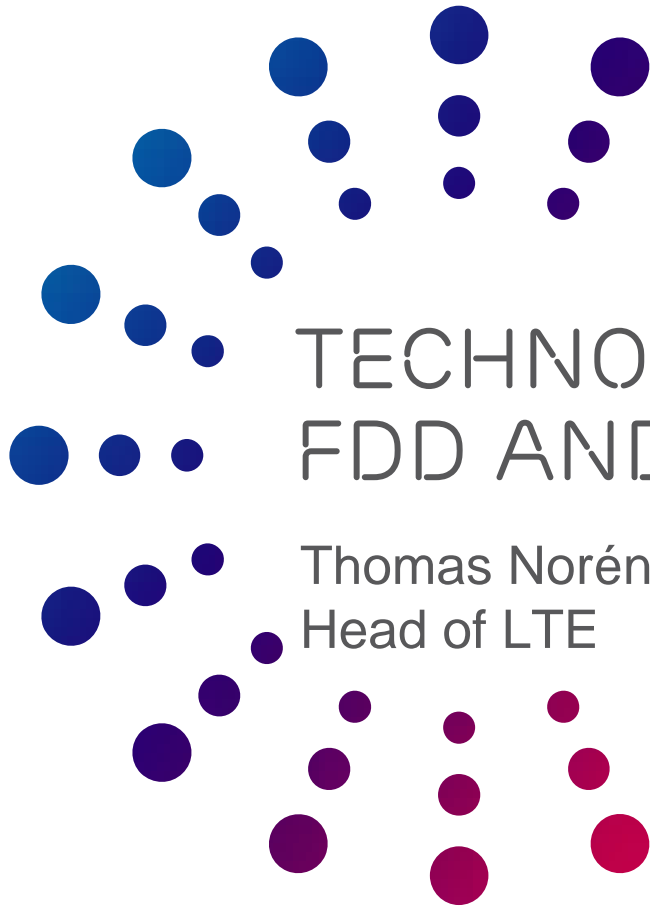


The "IMT band" in 2300-2400 MHz



Additional regional TDD opportunities for TD-LTE exist as well

Unpaired spectrum availability increasing – mainstream TDD opportunity

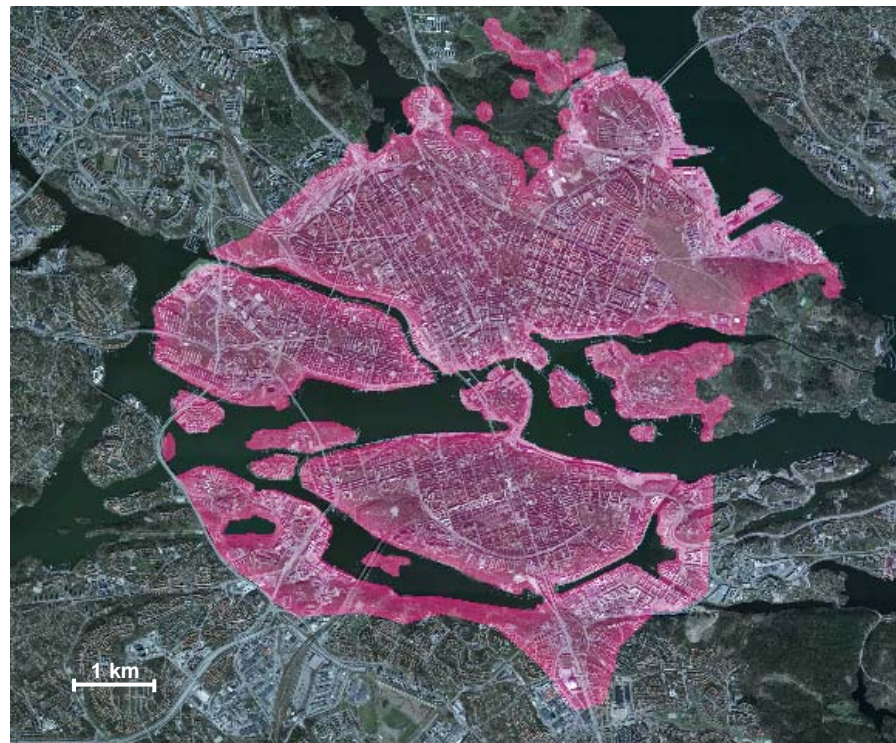


TECHNOLOGY UPDATE ON LTE - FDD AND TDD

Thomas Norén
Head of LTE

TELIASONERA – WORLD FIRST COMMERCIAL LTE

- › Commercial launch
Dec 14, 2009
 - Initially Stockholm city+
 - HSPA fallback; Dual mode device mid 2010
- › 25 Swedish cities end '10
- › Pilot customers in Denmark, Estonia, Finland, Latvia and Lithuania



TD-LTE - GLOBAL MARKET

- › Same LTE technology for FDD and TDD
- › Economies of scale
 - Devices
 - Infrastructure
- › Strong support from large operators
- › Spectrum available globally
 - China, India, US, and ROW



ERICSSON TD-LTE STRENGTHS

- › First with
 - FDD and TDD on same platform
 - 3GPP compliant end-to-end TD-LTE interoperability
 - TD-LTE Data call over air showcased in India
 - e2e demo with commercial grade chipset
- › Active participant in China Mobile trials since 2008
- › End-to-end solution
 - eNodeB – shared platform for FDD and TDD
 - EPC core
 - Mobile Backhaul
 - OSS
- › Cooperation with leading global UE and chipset vendors
- › Interoperability and co-existence with legacy systems



JUNE ROYAL WEDDING IN SWEDEN PRODUCED WITH 4G LTE TECHNOLOGY



Q&A



ERICSSON