

# AXH25xx

## Training Programs



# Why invest in AXH25xx Package

- **Faster time to revenue**

*“You can secure an rapid competence build-up, enabling an early commercial network launch.”*

- **Cost efficiency**

*“With competent and skilled staff, you will have a well-performed network, improving productivity and profitability.”*

- **Increased performance/less churn**

*“With competent and skilled staff, you will ensure high quality of service, leading to higher end-user satisfaction and competitiveness.”*

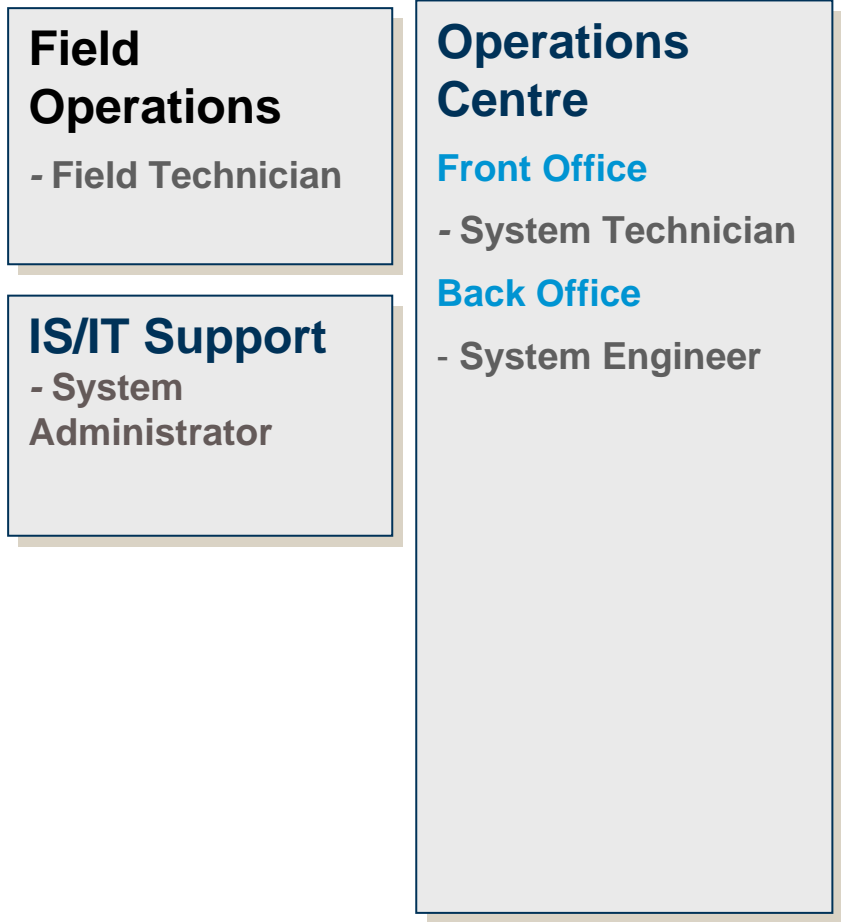
- **Minimal risk**

*“Your competent and skillful staff will be able to help you in maintaining a cost effective organization.”*


- **Organizational effectiveness**

*“Your staff will become more motivated through competence development and learning culture, which ensure you an effective organization for long-term success.”*

# AXH25xx Training Package

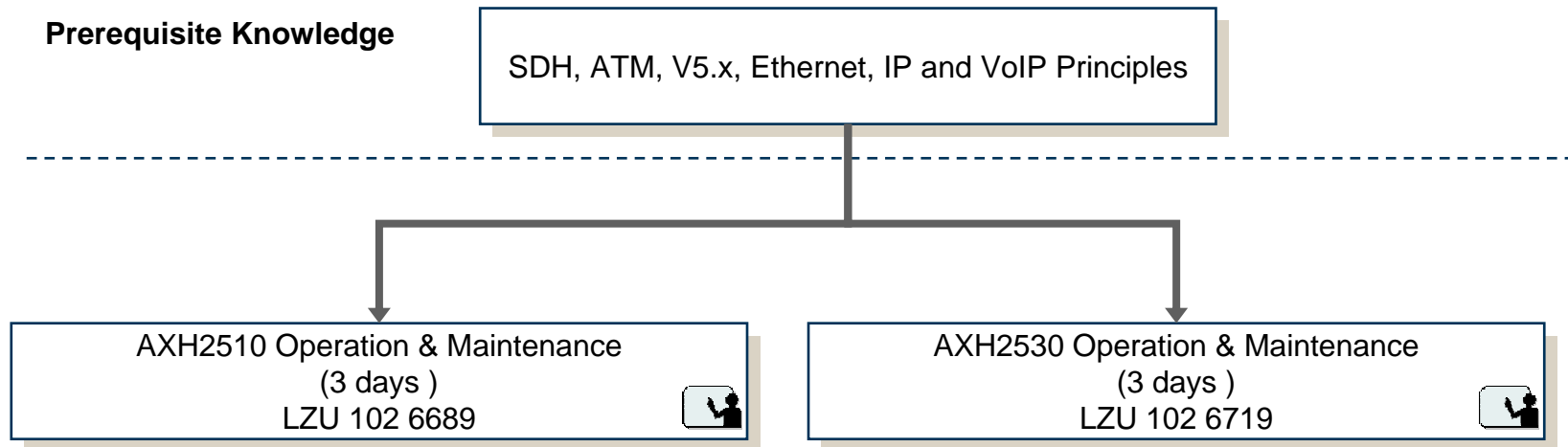


# Supported Service Delivery Methods

<b>Icon</b>	<b>Delivery Method</b>
	Instructor Led Training (ILT)

# AXH25xx Field Technician

FAB 102 1921



# AXH25xx System Technician

FAB 102 1923

## Prerequisite Knowledge

SDH, ATM, V5.x, Ethernet, IP and VoIP Principles

ServiceOn Access Basic  
(4 days )  
LZU 108 6690



ServiceOn Access Operations AXH  
(4 days )  
LZU 108 6695



# AXH25xx System Engineer

FAB 102 1924

## Prerequisite Knowledge

SDH, ATM, V5.x, Ethernet, IP and VoIP Principles

ServiceOn Access Basic  
(4 days )  
LZU 108 6690



ServiceOn Access Operations AXH  
(4 days )  
LZU 108 6695



# AXH25xx System Administrator

FAB 102 1922

ServiceOn Access  
System Administration (5 days )  
LZU 108 6691



**ERICSSON** 

**TAKING YOU FORWARD**