



Ericsson Multi Activation 5.4 Training Programs

Package Description



Table of Contents

- 1 Introduction3
- 2 Why invest in Ericsson Multi Activation 5.4 Package?3
- 3 What's in the Ericsson Multi Activation 5.4 Package?3
- 4 Delta5
- 5 Fundamentals6
- 6 Network Deployment, Operation and Configuration7
- 7 Related Training Package.....10

1 Introduction

Ericsson has developed a comprehensive Training Programs service to satisfy the competence needs of our customers, from exploring new business opportunities to expertise required for operating a network.

The Training Programs service is delineated into packages that have been developed to offer clearly defined, yet flexible training to target system and technology areas. Each package is divided into flows, to target specific functional areas within your organization for optimal benefits.

2 Why invest in Ericsson Multi Activation 5.4 Package?

This training package supports to reach a number of important goals in managing the Ericsson Multi Activation solutions:

- **Introduction of new services**
Decreased time to introduce new services = higher profit
- **Minimizing risks during operation**
Minimal risks in handling and operating the Multi Activation 5.4 by easy, quick and compact competence build up
- **Support of different technologies**
Comprehensive portfolio that meet all customer need independent on technical solution (IMS/WCDMA/GSM/ User Management (UDC Business Solution))
- **Operator's business strategies**
Faster time to revenue by gaining the knowledge on how the Ericsson Multi Activation solutions sit at the point where the operator's business strategies engage with the network's capabilities

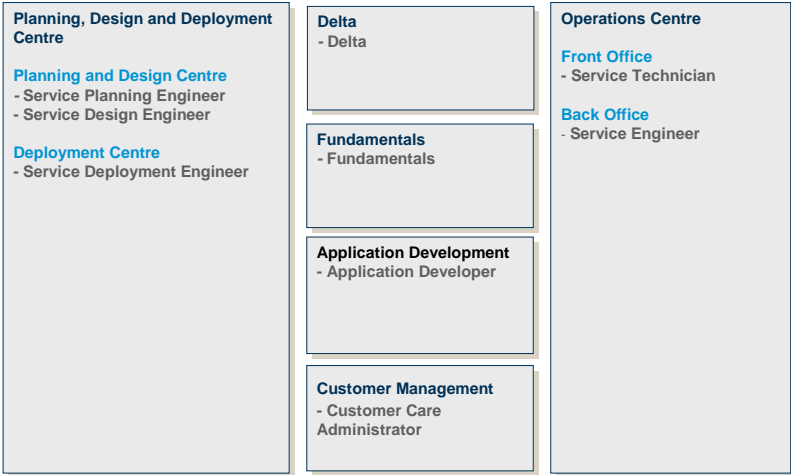
3 What's in the Ericsson Multi Activation 5.4 Package?

The following section describes each of the flows in details. Each flow states the prerequisite knowledge. The course flows are focusing on the following job categories.



What's in the Ericsson Multi Activation 5.4 Package?

Target Audience



4 Delta

4.1 EMA 5.4 Delta

4.1.1 What is achieved by attending the Flow

By attending this flow the student will get at proper understanding of the new and changed EMA 5.4 features. The main focus of this flow is to give focus on the impacts of new or updated features for Multi Activation.

4.1.2 Rationale for Flow design

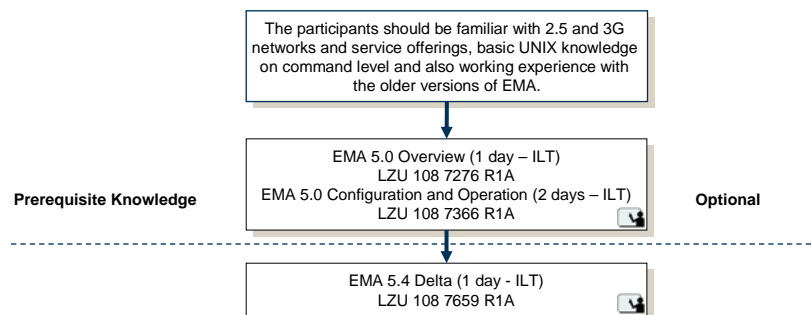
The flow exists to enable the operator to understand the main changes from previous Ericsson Multi Activation release.

4.1.3 Prerequisites

The participants should be familiar with 2.5 G and 3G networks and service offerings, have basic UNIX knowledge on command level and optionally, have attended the EMA 5.0 Overview and EMA 5.0 Configuration and Operation courses.

4.1.4 Training Flow

EMA 5.4 Delta



5 Fundamentals

5.1 EMA 5.4 Introduction

5.1.1 What is achieved by attending the Flow

By attending this flow the student will get at proper understanding of EMA 5.4 till the latest feature delivery, including the **Provisioning Gateway**. The main focus of this flow is to give a complete in-depth knowledge of the overall system.

5.1.2 Rationale for Flow design

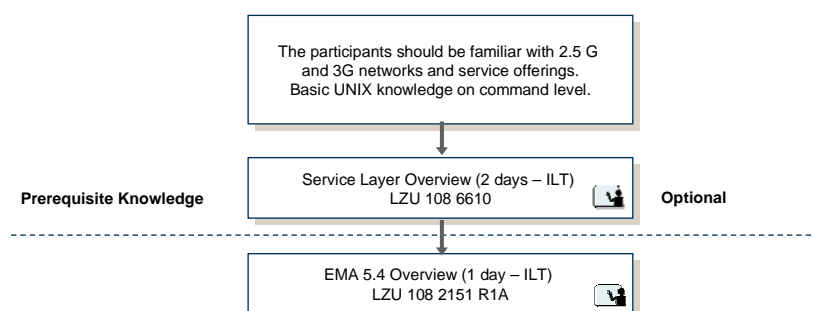
The flow exists to enable the operator to understand the Ericsson Multi Activation solution in an efficient way to ensure reliable provisioning of subscribers and services.

5.1.3 Prerequisites

The participants should be familiar with 2.5 G and 3G networks and service offerings, have basic UNIX knowledge on command level and optionally, have attended the course Service Layer Overview.

5.1.4 Training Flow

EMA 5.4 Introduction



6 Network Deployment, Operation and Configuration

6.1 EMA 5.4 Interfaces

6.1.1 What is achieved by attending the Flow

By attending this flow the student will get at proper understanding of EMA 5.4 interfaces and its protocols. The main focus of this flow is to give a complete in-depth knowledge of the User Provisioning, enabling the students to operate, set up and maintain an EMA Classic system.

6.1.2 Rationale for Flow design

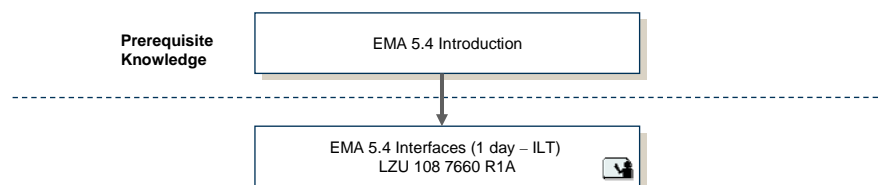
The flow exists to enable the operator to operate and maintain the Multi Activation system in an efficient way to ensure reliable provisioning of subscribers and services.

6.1.3 Prerequisites

The only prerequisite for this flow is to have attended the EMA 5.4 Introduction flow.

6.1.4 Training Flow

EMA 5.4 Interfaces



6.2 EMA 5.4 User Provisioning

6.2.1 What is achieved by attending the Flow

By attending this flow the student will get at proper understanding of EMA 5.4 inside different domains. The main focus of this flow is to give a complete in-depth knowledge of the User Provisioning, enabling the students to operate, set up and maintain an EMA Classic system.

6.2.2 Rationale for Flow design

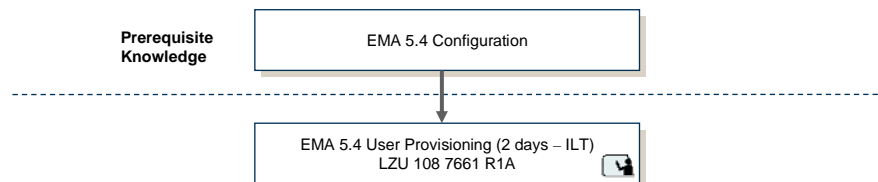
The flow exists to enable the operator to operate and maintain the Multi Activation system in an efficient way to ensure reliable provisioning of subscribers and services.

6.2.3 Prerequisites

The only prerequisite for this flow is to have attended the EMA 5.4 Configuration flow.

6.2.4 Training Flow

EMA 5.4 User Provisioning



6.3 EMA 5.4 Configuration

6.3.1 What is achieved by attending the Flow

By attending this flow the student will get at proper understanding on how to configure and operate the EMA 5.4

with different network elements. The main focus of this flow is to give a complete in-depth knowledge of EMA Operation and Configuration enabling the students to operate, set up and maintain an EMA Classic system.

6.3.2 Rationale for Flow design

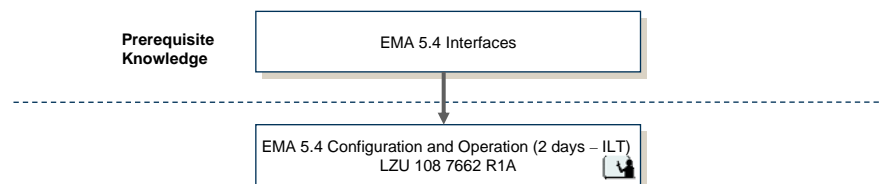
The flow exists to enable the operator to operate and maintain the Multi Activation system in an efficient way to ensure reliable provisioning of subscribers and services.

6.3.3 Prerequisites

The only prerequisite for this flow is to have attended the EMA 5.4 Interfaces flow.

6.3.4 Training Flow

EMA 5.4 Configuration



6.4 EMA 5.4 Application Development

6.4.1 What is achieved by attending the Flow

By attending this flow the student will get at proper understanding on how to create and implement support for Multi Vendor Network Elements and Subscriber Views using EMA 5.4 SDK. The main focus of this flow is to give a complete in-depth knowledge to deploy MOs that makes Multi Vendor Network Elements fit in your network and improve your Subscriber Views in you CAS system.

6.4.2 Rationale for Flow design

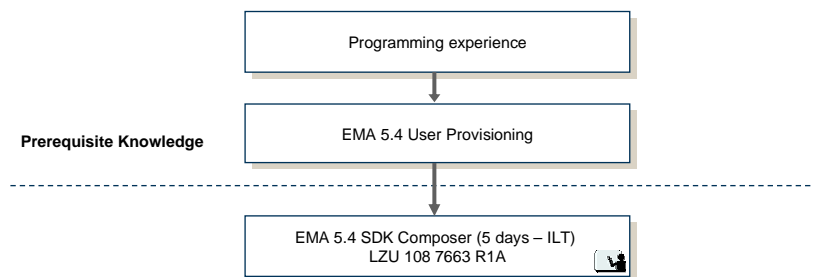
The flow exists to enable the operator to operate and maintain the Multi Activation system in an efficient way to ensure reliable provisioning of subscribers and services.

6.4.3 Prerequisites

The prerequisite for this flow is to have attended the EMA 5.4 User Provisioning flow.

6.4.4 Training Flow

EMA 5.4 Application Development



7 Related Training Package

The following related training packages can be found at http://www.ericsson.com/solutions/learning/find_training.shtml

- GSM R12 Core Network (includes the GPRS portfolio)
- IMS
- User Management (UDC Business Solution)
- WCDMA R5 Core Network (includes the GPRS portfolio)