

Instructions on Azure Multi-Factor Authentication (MFA) Enrollment

About Ericsson MFA

- ❖ To increase security, Ericsson is introducing Multi-Factor Authentication (MFA) for remote system access.
- ❖ This provides an additional security layer on top of the username and password.
- ❖ In addition to security updates, a new graphical user interface is being deployed.
- ❖ The purpose of this guide is to provide instructions for MFA enrollment.

Steps to Register Multifactor Authentication (MFA)

- 1) Access the following link <https://enable-mfa.myaccount.ericsson.net/>
- 2) Enter your email address, used during ISIGNUM creation & password and click on sign-in.

Enterprise sign in

Welcome to Ericsson!
Enter by supplying your user ID or email address and access a whole range of information, services and products.

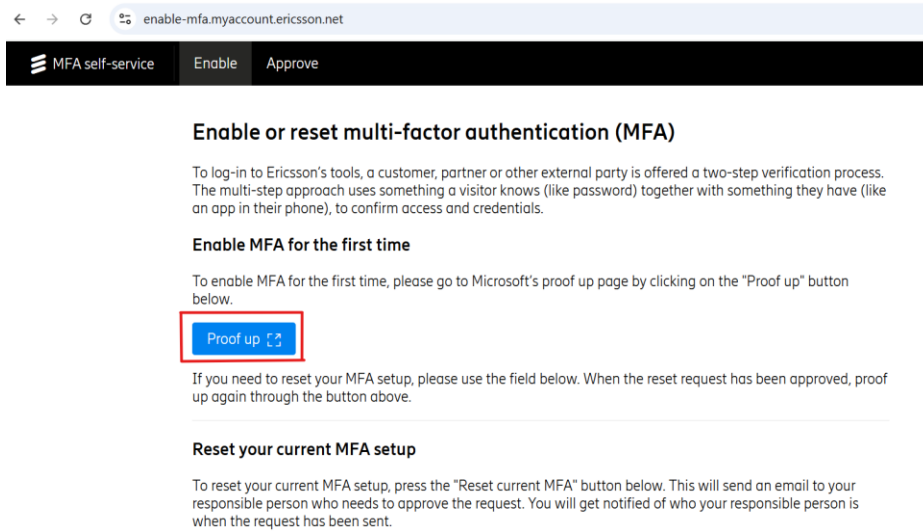
If you have trouble logging on due to a forgotten password, please click 'Forgot your password?'

[Password reset - External users](#)

[Password reset - Employees and consultants](#)

[Extranet support](#)

- 3) Click On proof up, you'll be redirected to <https://mysignins.microsoft.com/security-info>



enable-mfa.myaccount.ericsson.net

MFA self-service Enable Approve

Enable or reset multi-factor authentication (MFA)

To log-in to Ericsson's tools, a customer, partner or other external party is offered a two-step verification process. The multi-step approach uses something a visitor knows (like password) together with something they have (like an app in their phone), to confirm access and credentials.

Enable MFA for the first time

To enable MFA for the first time, please go to Microsoft's proof up page by clicking on the "Proof up" button below.

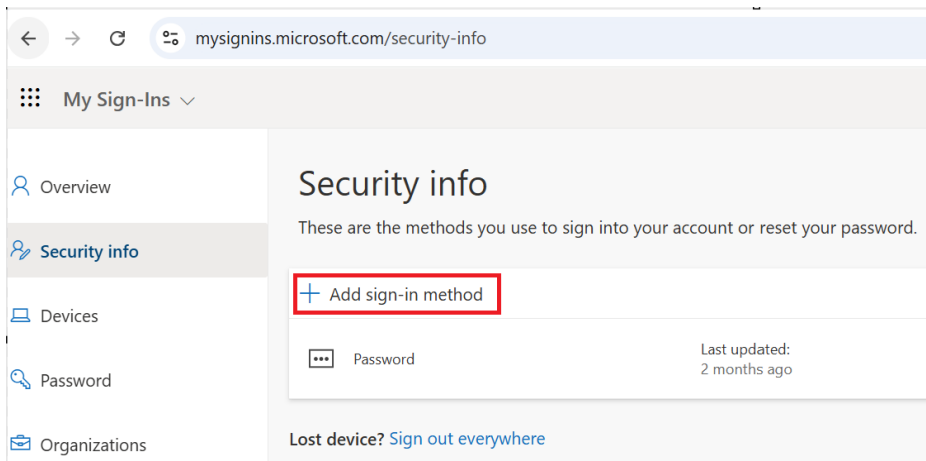
[Proof up](#)

If you need to reset your MFA setup, please use the field below. When the reset request has been approved, proof up again through the button above.

Reset your current MFA setup

To reset your current MFA setup, press the "Reset current MFA" button below. This will send an email to your responsible person who needs to approve the request. You will get notified of who your responsible person is when the request has been sent.

- 4) On the new window, click on "+ Add sign-in method"



mysignins.microsoft.com/security-info

My Sign-Ins

- Overview
- Security info
- Devices
- Password
- Organizations

Security info

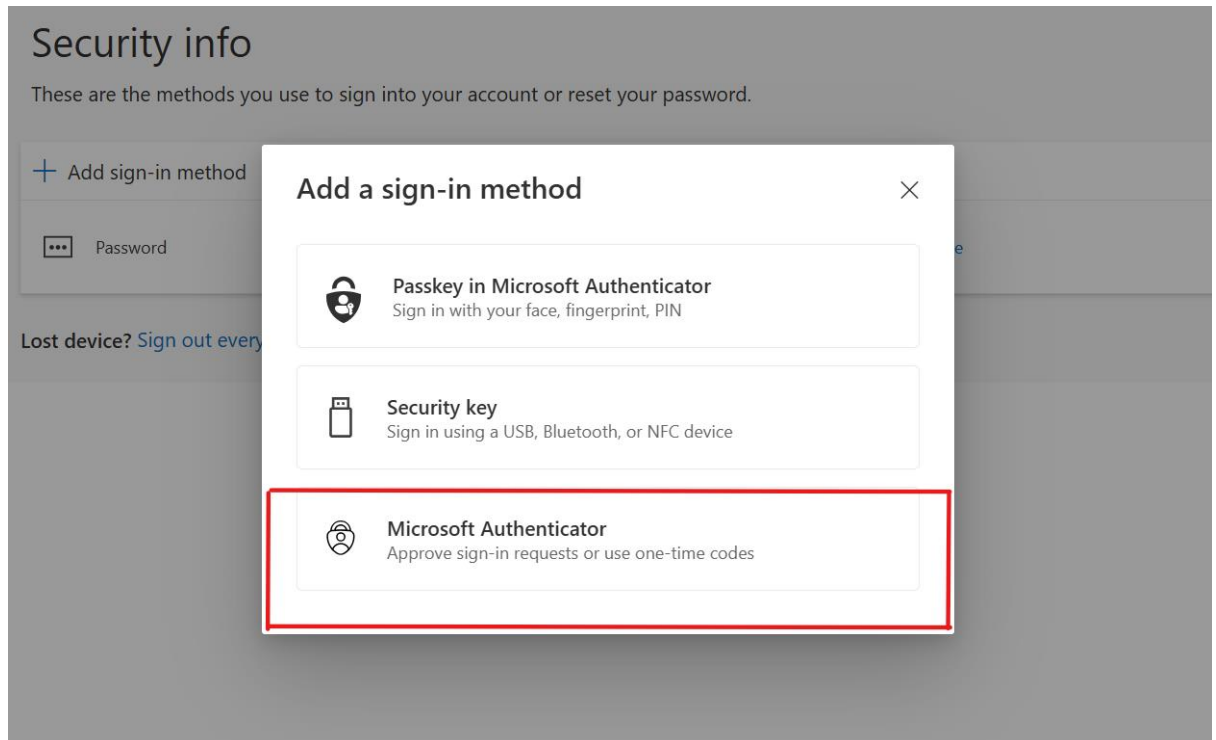
These are the methods you use to sign into your account or reset your password.

[+ Add sign-in method](#)

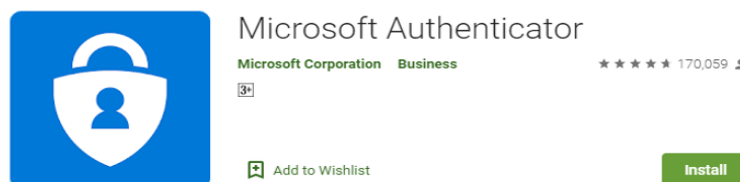
Password Last updated: 2 months ago

Lost device? [Sign out everywhere](#)

5) Choose only the option “Microsoft Authenticator”



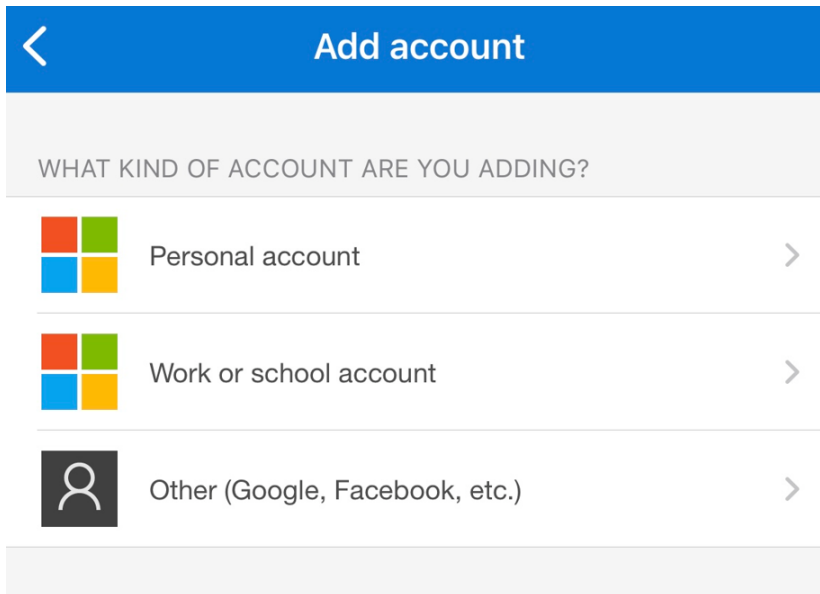
6) Install Microsoft Authenticator on your mobile phone and follow the instructions.



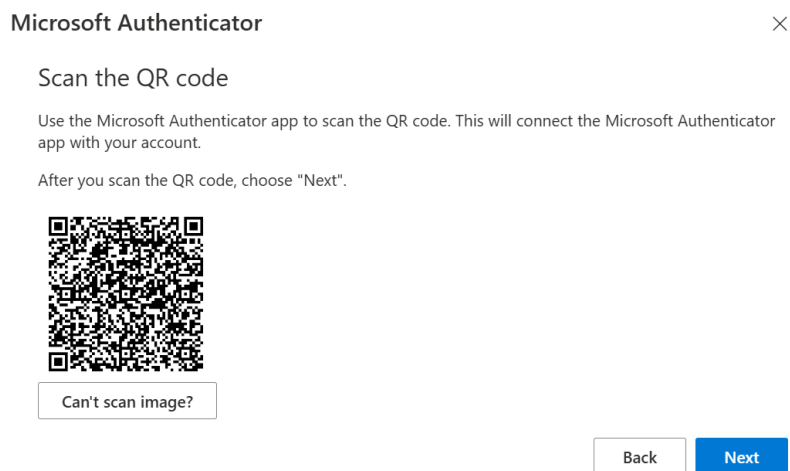
7) Open the Authenticator app and click on the “+” sign at the right top.



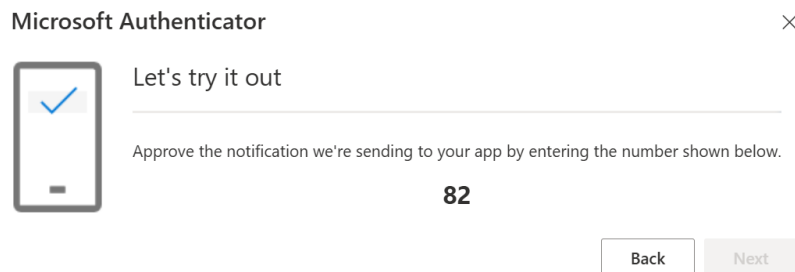
8) Select “Work or school account” and choose “Scan a QR code”



9) Scan the QR code in your laptop/desktop using the Mobile Authenticator app and click Next.



10) Users will be prompted to verify the number using their Mobile Authenticator app



11) Once validated, account is successfully added to the MS Authenticator app.

