

Confidentiality Class	External Confidentiality Label	Document Type	Page
Open		User Guide	1 (23)
Prepared By (Subject Responsible)		Approved By (Document Responsible)	Checked
EDIAZHE Dianping Zheng D		BNEWCIK [Brad Yang]	
Document Number	Revision	Date	Reference
30/198 17-LXA 116 620 Uen	B	2026-03-27	



# Guideline for Ericsson IPC Builder

## Contents

<b>1. Overview.....</b>	<b>2</b>
<b>2. E-mail REQUEST from Ericsson.....</b>	<b>3</b>
<b>3. Introduction to Ericsson IPC Builder .....</b>	<b>4</b>
<b>4. Clearing content.....</b>	<b>5</b>
<b>5. Importing the Request file.....</b>	<b>6</b>
<b>6. Filling in data .....</b>	<b>8</b>
6.1 Basic sheet.....	9
6.2 Manufacturing Process Information Sheet.....	10
6.3 Homogeneous Material sheet .....	12
6.3.1 Product Section.....	13
6.3.2 Sub Product Section .....	14
6.3.3 Homogeneous Material and Substance.....	15
6.3.3.1 Homogeneous Material.....	15
6.3.3.2 Substance .....	15
6.3.3.3 TBBP-A Usage.....	16
6.3.3.4 Recycle Material Data.....	17
6.3.3.5 Rules to Follow.....	18
<b>7. Validate the data .....</b>	<b>19</b>
7.1 Homogenous Materials and Weight calculation.....	19
7.2 Other fields Validation.....	21
<b>8. Generate the declaration .....</b>	<b>22</b>

Confidentiality Class	External Confidentiality Label	Document Type	Page
Open		User Guide	2 (23)
Prepared By (Subject Responsible)		Approved By (Document Responsible)	Checked
EDIAZHE Dianping Zheng D		BNEWCIK [Brad Yang]	
Document Number	Revision	Date	Reference
30/198 17-LXA 116 620 Uen	B	2026-03-27	



## 1. Overview

This user guide provides instructions for suppliers to generate an IPC-1752A Class D material declarations by using the ERICSSON IPC Builder tool.

IPC-1752A is an international standard for exchanging materials declaration data and has been developed by a consortium of OEMs, EMS providers, component manufacturers, and other stakeholders. For more details, refer to [Materials Declaration Data Exchange | IPC Standards](#).

Confidentiality Class	External Confidentiality Label	Document Type	Page
Open		User Guide	3 (23)
Prepared By (Subject Responsible)		Approved By (Document Responsible)	Checked
EDIAZHE Dianping Zheng D		BNEWCNIK [Brad Yang]	
Document Number	Revision	Date	Reference
30/198 17-LXA 116 620 Uen	B	2026-03-27	



## 2. E-mail REQUEST from Ericsson

To request a material declaration for a specific part, Ericsson will send an email to the supplier. The email contains the following.

SupplierPartRequestSummary\_2024-09-26\_05.37.24\_AM.zip

3 KB

**Attachment in XML-format**

REQUEST SUBMITTED by Ericsson

Dear Material Declaration Team,

Material Content declarations are requested for specific parts that you supply to Ericsson.

Attached is a Material Declaration request in xml format IPC 1752A - Class D: Material Composition Summary Declaration. Please fill in the xml file with required information and send it back to <mailto:material.declaration@ericsson.com>

For more efficient handling, please also add the sender of this email in your reply. If the material declaration is approved, you will not receive any information. If there is any error in the material declaration file detected by the system you will receive an email back with the errors listed. You will then have to correct and re-send the material declaration. You will also be notified if the material declaration file is rejected by the approver. If so, please modify the declaration accordingly, contact Ericsson (sender of this email) if needed.

The completed responses to this request are due no later than 2024-10-11.

The parts requested in this email include:

301286

**Parts for which declarations are requested**

\*\*\*\*\*

Please find Ericsson requirement on material declaration and more information by following links:

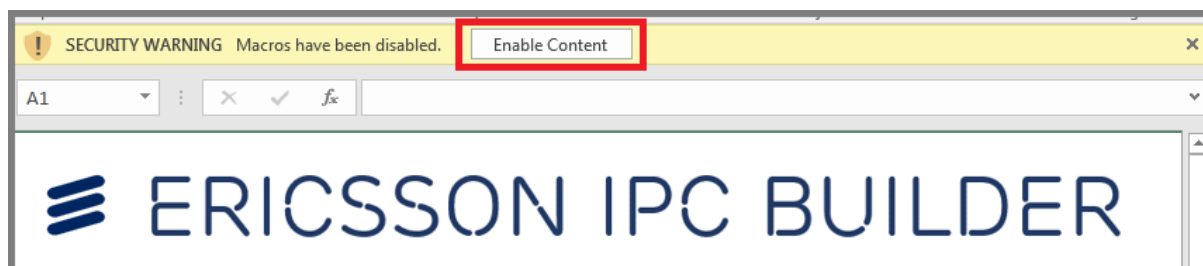
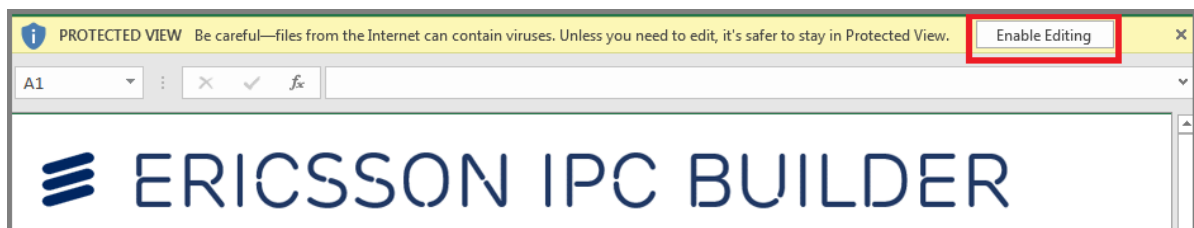
**Attention:** The xml file in the attachment contains key information about this part and this request. Please import it to your editing tool then begin to input the material data.

Confidentiality Class Open	External Confidentiality Label	Document Type User Guide	Page 4 (23)
Prepared By (Subject Responsible) EDIAZHE Dianping Zheng D		Approved By (Document Responsible) BNEWCNIK [Brad Yang]	Checked
Document Number 30/198 17-LXA 116 620 Uen	Revision B	Date 2026-03-27	Reference

### 3. Introduction to Ericsson IPC Builder

The Ericsson IPC builder is a tool designed to streamline the creation of IPC-1752A Class D declarations.

**Note:** Ensure that macros are enabled when opening the file to access all functionalities.



The steps of generating an MD file are as below:

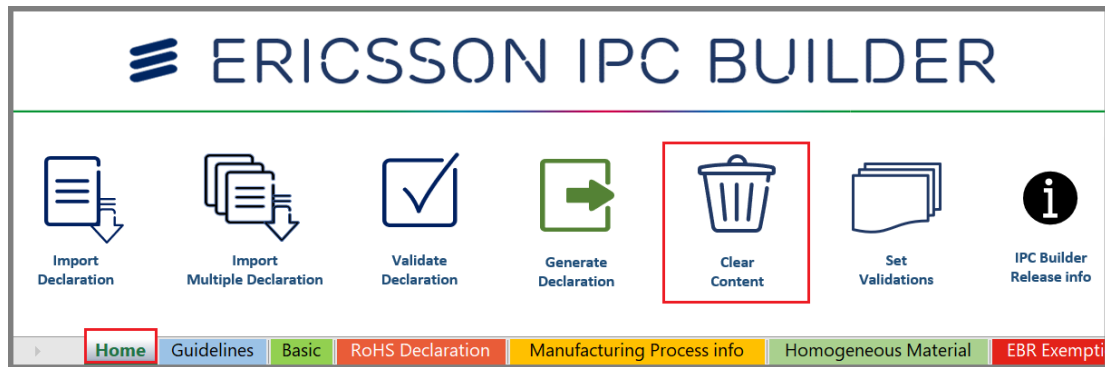
- 1) Clear content
- 2) Import the request file
- 3) Fill in data
- 4) Validate the data
- 5) Generate the declaration

Confidentiality Class	External Confidentiality Label	Document Type	Page
Open		User Guide	5 (23)
Prepared By (Subject Responsible)		Approved By (Document Responsible)	Checked
EDIAZHE Dianping Zheng D		BNEWCIK [Brad Yang]	
Document Number	Revision	Date	Reference
30/198 17-LXA 116 620 Uen	B	2026-03-27	



## 4. Clearing content

To create a new file, clear the existing content by clicking the “Clear Content” button on the homepage. This action will erase all data in the file.



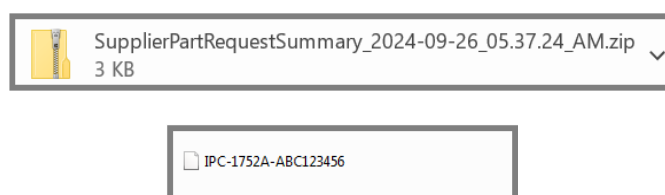
Confidentiality Class	External Confidentiality Label	Document Type	Page
Open		User Guide	6 (23)
Prepared By (Subject Responsible)		Approved By (Document Responsible)	Checked
EDIAZHE Dianping Zheng D		BNEWCNIK [Brad Yang]	
Document Number	Revision	Date	Reference
30/198 17-LXA 116 620 Uen	B	2026-03-27	



## 5. Importing the Request file

The request file attached to the Ericsson email contains essential part information in a zipped XML format. Follow these steps to import the file:

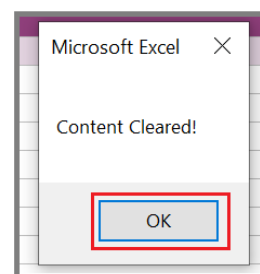
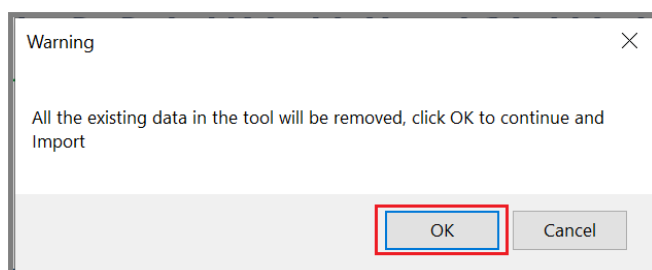
Extract the XML file from the zipped attachment.



Click the "Import Declaration" button in the homepage.

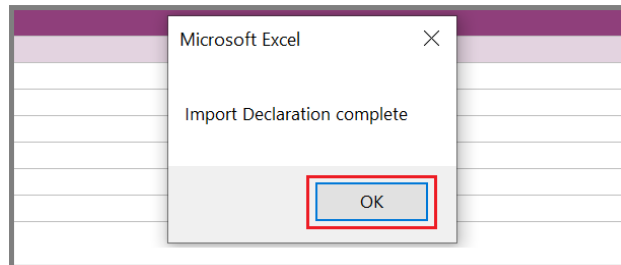


Warning message will appear. Click "OK" to proceed.



Select the XML file to import and confirm by clicking "OK".

Confidentiality Class	External Confidentiality Label	Document Type	Page
Open		User Guide	7 (23)
Prepared By (Subject Responsible)		Approved By (Document Responsible)	Checked
EDIAZHE Dianping Zheng D		BNEWCIK [Brad Yang]	
Document Number	Revision	Date	Reference
30/198 17-LXA 116 620 Uen	B	2026-03-27	



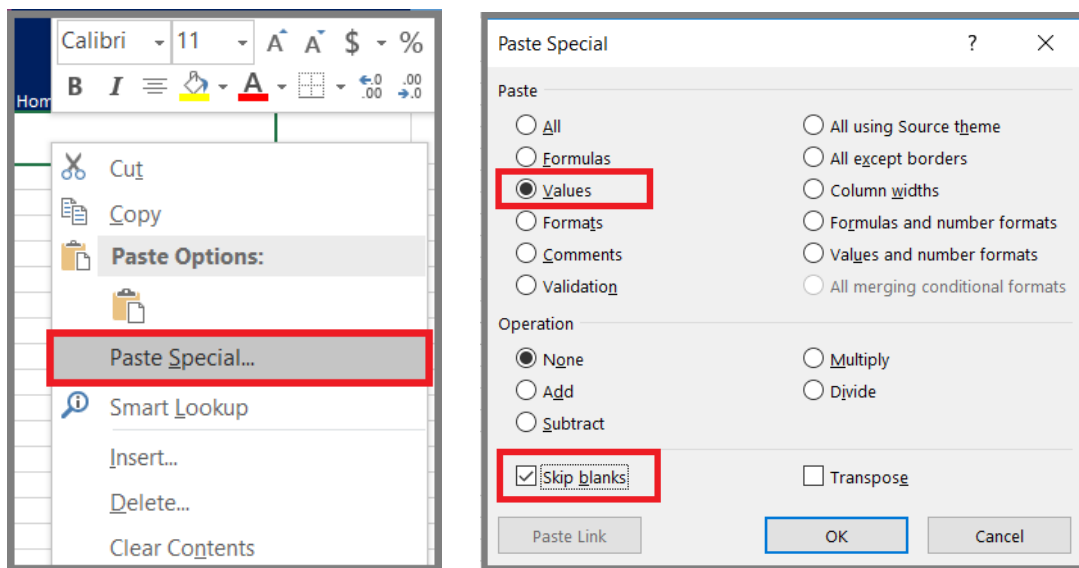
Confidentiality Class	External Confidentiality Label	Document Type	Page
Open		User Guide	8 (23)
Prepared By (Subject Responsible)		Approved By (Document Responsible)	Checked
EDIAZHE Dianping Zheng D		BNEWCNIK [Brad Yang]	
Document Number	Revision	Date	Reference
30/198 17-LXA 116 620 Uen	B	2026-03-27	

## 6. Filling in data

The tool requires data input across three sheets: Basic Sheet, Manufacturing Process Information Sheet, and Homogeneous Material Sheet.

### Important:

- Each sheet contains predefined data validations that must be adhered to for accurate reporting.
- Directly copying data from other files might override these validations, leading to runtime errors. Use the "Import Declaration" macro to import XML data and manually enter any missing fields.
- If large datasets need to be pasted, please do NOT paste the data directly. Use "Paste Special..." with the "Values" and "Skip Blanks" options like below.



**Caution:** DO NOT merge cells within the file, as this may cause runtime errors.

Confidentiality Class	External Confidentiality Label	Document Type	Page
Open		User Guide	9 (23)
Prepared By (Subject Responsible)	Approved By (Document Responsible)	Checked	
EDIAZHE Dianping Zheng D	BNEWCJK [Brad Yang]		
Document Number	Revision	Date	Reference
30/198 17-LXA 116 620 Uen	B	2026-03-27	

## 6.1 Basic sheet

Most fields in the Basic Sheet are pre-filled using the Ericsson request file. However, the following fields must be completed by the user:

- Response Date
- Email Address
- Supplier Acceptance

Requester Information		Supplier Information	
<b>Company Information</b> Company Name * Ericsson Company Unique ID Unique Identity SS33 Unique ID Authority		<b>Request Information</b> Request Date * 2024-11-07 Request Document ID Comment Respond By Date 2024-11-13 Internal Supplier ID SS33 Field Lock FALSE	
<b>Contact Information</b> Contact Name * TestEngineer Contact Title Mr/Ms Comment Contact Email Email Address * TestEngineer@ericsson.com Contact Phone Phone Number		<b>Company Information</b> Company Name * ABC Company Unique ID Unique Identity SS33 Unique ID Authority	
<b>Declaration</b> Legal Type * Standard Supplier certifies that it gathered the provided information and such information is true and correct to the best of its knowledge and belief, as of the date that Supplier completes this form. Supplier acknowledges that Company will rely on this certification in determining the compliance of its products. Company acknowledges that Supplier may have relied on information provided by others in completing this form, and that Supplier may not have independently verified such information. However, in situations where Supplier has not independently verified information provided by others, Supplier agrees that, at a minimum, its suppliers have provided certifications regarding their contributions to the part(s), and those certifications are at least as comprehensive as the certification in this paragraph. If the Company and the Supplier enter into a written agreement with respect to the identified part(s), the terms and conditions of that agreement, including any warranty rights and/or remedies provided as part of that agreement, will be the sole and exclusive source of the Supplier's liability and the Company's remedies for issues that arise regarding information the Supplier provides in this form. Legal Def * Supplier Acceptance * <input checked="" type="checkbox"/> Accepted		<b>Response Status</b> Response Date * 2024-11-14 Response Document ID Field Lock FALSE Comment	
<b>Additional Contact Info - Address</b> Internal Street City State Country Zip Code Comment		<b>Contact Information</b> Contact Name * ABC Contact Title Comment Contact Email Email Address * abc@test.com Contact Phone Phone Number	
		<b>Authorized Representative</b> Name abc@test.com Title Comment Contact Email Email Address * abc@test.com Contact Phone Phone Number	

Example pattern for Basic sheet:

Requester Information		Supplier Information	
<b>Company Information</b> Company Name * Ericsson Company Unique ID Unique Identity Unique ID Authority		<b>Request Information</b> Request Date * 2017-09-08 Request Document ID Comment Respond By Date 2017-09-15 Internal Supplier ID 1234 Field Lock FALSE	
<b>Contact Information</b> Contact Name * Dianping Zheng Contact Title Comment Contact Email Email Address * dianping.d.zheng@ericsson.com Contact Phone Phone Number N/A		<b>Company Information</b> Company Name * ABC Company Unique ID 1234 Unique Identity Unique ID Authority	
<b>Declaration</b> Legal Type * Standard Supplier certifies that it gathered the provided information and such information is true and correct to the best of its knowledge and belief, as of the date that Supplier completes this form. Supplier acknowledges that Company will rely on this certification in determining the compliance of its products. Company acknowledges that Supplier may have relied on information provided by others in completing this form, and that Supplier may not have independently verified such information. However, in situations where Supplier has not independently verified information provided by others, Supplier agrees that, at a minimum, its suppliers have provided certifications regarding their contributions to the part(s), and those certifications are at least as comprehensive as the certification in this paragraph. If the Company and the Supplier enter into a written agreement with respect to the identified part(s), the terms and conditions of that agreement, including any warranty rights and/or remedies provided as part of that agreement, will be the sole and exclusive source of the Supplier's liability and the Company's remedies for issues that arise regarding information the Supplier provides in this form. Legal Def * Supplier Acceptance * <input checked="" type="checkbox"/>		<b>Response Status</b> Response Date * <input checked="" type="checkbox"/> Response Document ID Field Lock FALSE Comment	
		<b>Contact Information</b> Contact Name * ABC Test Contact Title Comment Contact Email Email Address * ABC Test@test.com Contact Phone Phone Number 123456	
		<b>Authorized Representative</b> Name Title Comment Contact Email Email Address * <input checked="" type="checkbox"/> Contact Phone Phone Number	

Confidentiality Class	External Confidentiality Label	Document Type	Page
Open		User Guide	10 (23)
Prepared By (Subject Responsible)	Approved By (Document Responsible)		Checked
EDIAZHE Dianping Zheng D	BNEWCIK [Brad Yang]		
Document Number	Revision	Date	Reference
30/198 17-LXA 116 620 Uen	B	2026-03-27	



## 6.2 Manufacturing Process Information Sheet

This sheet captures details about the manufacturing process to ensure proper assembly or disassembly without damaging components. Fields marked in **red** are mandatory.

Manufacturing Information	Package				Solder	Terminal	
	BGA/SMD/PCB	Peak Process Body Temperature	Max Time at Peak Temperature	Package Designator	Maximum Number of Solder Process Cycles	Base Alloy	Plating
Comments							

Home Guidelines Basic RoHS Declaration **Manufacturing Process info** Homogeneous Material EBR Exemptions Errors

Set the “BGA/SMD/PCB” value firstly and then fill in with other items.

BGA = Ball Grid Array

SMD = Surface Mounted Devices

PCB = Printed Circuit Board

- For components that do not support reflow soldering process, select “NON SMD”. In this case, other fields will automatically be filled with “NAC”. Example pattern for NON SMD part:

Manufacturing Information	Package				Solder	Terminal	
	BGA/SMD/PCB	Peak Process Body Temperature	Max Time at Peak Temperature	Package Designator	Maximum Number of Solder Process Cycles	Base Alloy	Plating
Comments							
	NON SMD			NAC	NAC	NAC	NAC

Home Guidelines Basic RoHS Declaration **Manufacturing Process info** Homogeneous Material Exemptions Errors

- For components supporting reflow soldering process, select “SMD” or “BGA”, and fill in the remaining **mandatory** fields accordingly, including:
  - Peak Process Body Temperature,
  - Max Time at Peak Temperature,
  - Maximum Number of Solder Process Cycles
  - Base Alloy
  - Plating

Confidentiality Class	External Confidentiality Label	Document Type	Page
Open		User Guide	11 (23)
Prepared By (Subject Responsible)	Approved By (Document Responsible)		Checked
EDIAZHE Dianping Zheng D	BNEWCIK [Brad Yang]		
Document Number	Revision	Date	Reference
30/198 17-LXA 116 620 Uen	B	2026-03-27	



Below is an example pattern for Manufacturing sheet, SMD part.

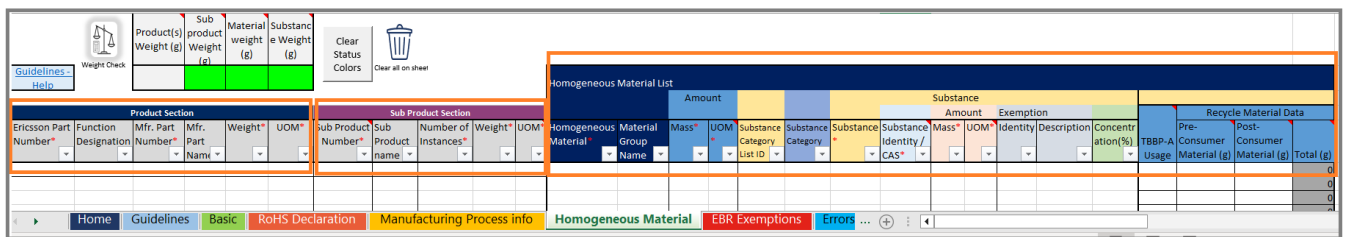
Manufacturing Information							
Comments	Package				Solder	Terminal	
	BGA/SMD/PCB	Peak Process Body Temperature	Max Time at Peak Temperature	Package Designator	Maximum Number of Solder Process Cycles	Base Alloy	Plating
	SMD	260	30	Select		Copper Alloy	Nickel/Gold (Ni/Au)

[Home](#)
[Guidelines](#)
[Basic](#)
[RoHS Declaration](#)
[Manufacturing Process info](#)
[Homogeneous Material](#)
[Exemptions](#)
[Errors](#)

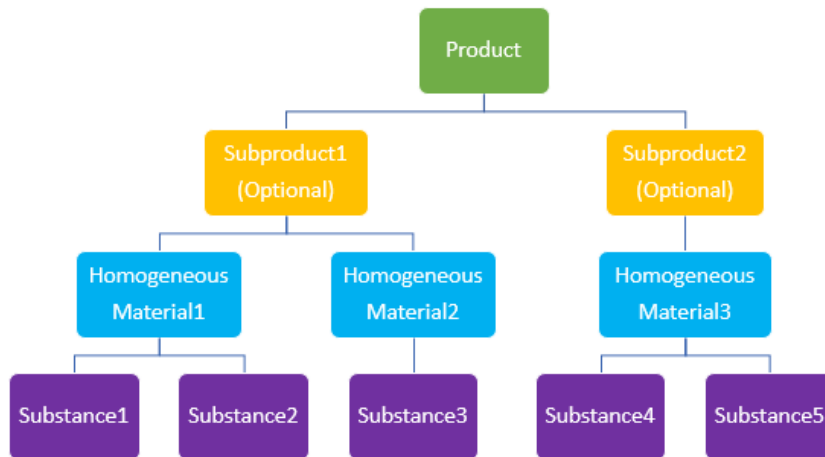
### 6.3 Homogeneous Material sheet

This sheet consists of three sections:

- Product Section
- Sub Product Section
- Homogeneous Material List



Below is an example of declaration hierarchy.



Confidentiality Class	External Confidentiality Label	Document Type	Page
Open		User Guide	13 (23)
Prepared By (Subject Responsible)		Approved By (Document Responsible)	Checked
EDIAZHE Dianping Zheng D		BNEWCIK [Brad Yang]	
Document Number	Revision	Date	Reference
30/198 17-LXA 116 620 Uen	B	2026-03-27	



### 6.3.1 Product Section

The Product section contains basic information on the part, including:

- Ericsson PN
- Function designation
- Manufacturer PN
- Manufacturer Part Name
- Weight info

Fields such as **Ericsson PN**, function designation and **Manufacturer PN** are pre-filled if the request file is imported.

**Product Weight & UOM** – These fields describe the mass info of the whole component. They are **mandatory** to be filled.

Product Section					
Ericsson Part Number*	Function Designation	Mfr. Part Number*	Mfr. Part Name	Weight*	UOM*
RYT 123 456/1	Test Part	ABC123456			

Navigation: Home | Guidelines | Basic | RoHS Declaration | M

Confidentiality Class Open	External Confidentiality Label	Document Type User Guide	Page 14 (23)
Prepared By (Subject Responsible) EDIAZHE Dianping Zheng D	Approved By (Document Responsible) BNEWCIK [Brad Yang]	Checked	
Document Number 30/198 17-LXA 116 620 Uen	Revision B	Date 2026-03-27	Reference



### 6.3.2 Sub Product Section

Sub Product is a sub-unit of a product. This section describes details about sub-units, including:

- Sub Product Number
- Sub Product Name
- Number of Instances
- Weight Information

Sub Product Number, Number of Instances, and weight, UOM info are mandatory to be filled.

**Number of Instances** – Specifies how many times the sub-product is included in the component.

Sub Product Section				
Sub Product Number*	Sub Product name	Number of Instances*	Weight*	UOM*

- If no Sub product exist, use the Manufacturer PN as the Sub-Product Number, set the Number of Instances to "1", and copy the weight and UOM from the complete product.
- Each Sub-Product Number can only be used once. If a Sub-Product occurs multiple times, include it once and indicate the number of instances.

Confidentiality Class	External Confidentiality Label	Document Type	Page
Open		User Guide	15 (23)
Prepared By (Subject Responsible)		Approved By (Document Responsible)	Checked
EDIAZHE Dianping Zheng D		BNEWCIK [Brad Yang]	
Document Number	Revision	Date	Reference
30/198 17-LXA 116 620 Uen	B	2026-03-27	



### 6.3.3 Homogeneous Material and Substance

Homogeneous Material List																			
Homogeneous Material*	Material Group Name	Amount		Substance Category List ID	Substance Category	Substance		Amount		Exemption Identity	Description	Concentration(%)	Recycle Material Data						
		Mass*	UOM*			Substance*	Substance Identity / CAS*	Mass*	UOM*				TBBP-A Usage	Pre-Consumer Material (g)	Post-Consumer Material (g)	Total (g)			

#### 6.3.3.1 Homogeneous Material

**Homogeneous Material** - The homogeneous materials name in each of the products and/or subproducts are identified in this field. This field is **mandatory**.

**Mass and UOM** - Declares total mass of the homogeneous material that being reported. These fields are **mandatory**.

#### 6.3.3.2 Substance

**Substance** - This field identifies the name of the substance being declared. This field is **mandatory** as required for accurate reporting of the subject product.

**Substance Identity / CAS** - This field identifies the CAS number of the chemical compound comprising the substance being reported. This field is **mandatory**.

**Mass, UOM** - This field identifies the amount of the substance in the homogeneous material. These two fields are **mandatory**.

**Exemption Identity** – This fields identify an EU RoHS exemption that applies to the product. If the product contains restricted substance and above an EU RoHS threshold, this field is **mandatory**.

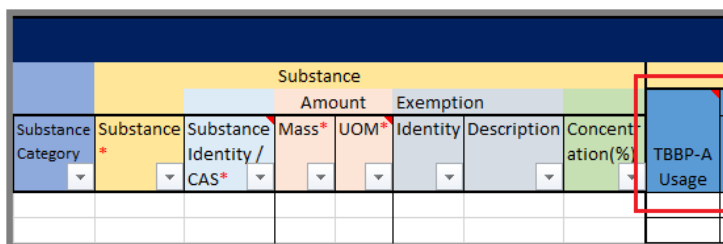
**Exemption Description** - Auto-fills based on the selected **Exemption Identity**.

Confidentiality Class	External Confidentiality Label	Document Type	Page
Open		User Guide	16 (23)
Prepared By (Subject Responsible)		Approved By (Document Responsible)	Checked
EDIAZHE Dianping Zheng D		BNEWCNIK [Brad Yang]	
Document Number	Revision	Date	Reference
30/198 17-LXA 116 620 Uen	B	2026-03-27	

**Concentration** - This field identifies the concentration of the substance within a homogeneous material. This field is optional. The value is expressed in mass %. **Do not include the percent symbol (%)** when entering this value. Only the numeric value should be entered. For example, if the concentration is 89%, enter 89, **not** 89%.

### 6.3.3.3 TBBP-A Usage

If the component contains TBBP-A substance (CAS No. 79-94-7), its usage (additive / reactive) should be declared. This field is **mandatory** for TBBP-A.



Substance							
Substance Category	Substance *	Substance Identity / CAS *	Amount Mass *	Amount UOM *	Exemption Identity	Description	Concentration (%)
							TBBP-A Usage

There are two values 'additive' and 'reactive' for this attribute:

**Reactive** - the TBBPA has chemically reacted with the polymer and will not migrate from the polymer/product.

**Additive** - the TBBPA is blended with the polymer and will easily migrate from the polymer/product.

**Attention:** This is applicable **ONLY** for Substances with the CAS number **79-94-7**.

Confidentiality Class Open	External Confidentiality Label	Document Type User Guide	Page 17 (23)
Prepared By (Subject Responsible) EDIAZHE Dianping Zheng D	Approved By (Document Responsible) BNEWCNIK [Brad Yang]	Checked	
Document Number 30/198 17-LXA 116 620 Uen	Revision B	Date 2026-03-27	Reference



### 6.3.3.4 Recycle Material Data

This Recycle Material Data is applicable for packaging material products. If the packaging material contains Recycle Material Data, the Pre-Consumer Material and Post-Consumer Material should be declared.

Substance							TBBP-A Usage	Recycle Material Data		
Substance *	Substance Identity / CAS *	Mass *	UOM *	Exemption Identity	Description	Concentration (%)		Pre-Consumer Material (g)	Post-Consumer Material (g)	Total (g)
										0
										0

**Pre-Consumer Material (g)** (a.k.a. Post-Industrial Recycled content (PIR)) – Material diverted from the waste generated during a manufacturing process excluding reutilization of materials such as rework, regrind or scrap generated in a process and being reincorporated in the same process that generated it. Same process means the same manufacturing operation for the same type of product in the same or different physical location. Users need to input the values in grams.

**Post-Consumer Material (g)** (Post-Consumer Recycled content (PCR)) – Material recovered from waste generated by households or by commercial, industrial, and institutional facilities in their role as end-users of a finished product. This includes returns of products, or parts thereof, from the distribution of finished products for end-users. Users need to input the values in grams.

**Total (g)** – This column is the total recycle material data which is **Auto** populated and based on Pre-Consumer Material and Post-Consumer Material data.

Confidentiality Class	External Confidentiality Label	Document Type	Page
Open		User Guide	18 (23)
Prepared By (Subject Responsible)		Approved By (Document Responsible)	Checked
EDIAZHE Dianping Zheng D		BNEWCIK [Brad Yang]	
Document Number	Revision	Date	Reference
30/198 17-LXA 116 620 Uen	B	2026-03-27	



### 6.3.3.5 Rules to Follow

There are some rules that need to be followed when filling in the Homogeneous Material sheet:

- The valid CAS numbers are mandatory. (If there is a need to not disclose the full content of a certain material, please contact the Ericsson representative given in the material declaration request mail for information on how to declare a material as “trade secret”)
- The sum weight of substances in one homogeneous material should equal to the declared weight of homogeneous material. The tolerance should be less than 1%.
- The sum weight of all substances should equal to the declared weight of part. The tolerance should be less than 1%.
- Duplicated CAS in one homogeneous material is not allowed.

Below is an example pattern for Homogeneous Material sheet.

Status		Homogeneous Material List																	
Sub Product Section						Amount		Substance				Amount		Exemption					
Weight*	UOM*	Sub Product Number*	Sub Product name	Number of Instance*	Weight*	UOM*	Homogeneous Material*	Material Group Name*	Mass*	UOM*	Substance Category*	Substance Name*	Substance Identity / CAS#*	Mass*	UOM*	Description	Concentration(%)	TBBP-A Usage	Pr
138	mg	SPA001	SubProduct1	1	8	mg	Material1	MaterialGp1	6	mg	Supplier	Iron	7439-89-6	5	mg				
											Supplier	Fiber Glass	65997-17-3	1	mg				
							Material2	MaterialGp2	2	mg	Supplier	Aluminium	7429-90-5	1.8	mg				
											Supplier	Titanium oxide	13463-67-7	0.2	mg				
		SPB002	SubProduct2	2	15	mg	Material3	MaterialGp3	10	mg	Supplier	Iron	7439-89-6	0.7	mg				
											Supplier	Copper	7440-50-8	9	mg				
											Supplier	Lead	7439-92-1	0.3	mg	6(c)	Lead as an alloying element in copper containing up to 4% lead by weight		
							Material4	MaterialGp4	5	mg	Supplier	Phosphorous	7723-14-0	5	mg				
		SPC003	SubProduct3	5	2	mg	Material5	MaterialGp5	2	mg	Supplier	Antimony oxide	1309-64-4	0.2	mg				
											Supplier	Silver	7440-22-4	0.4	mg				
											Supplier	Glass Fibres	65997-17-3	0.8	mg				
											Supplier	Carbon Black	1333-86-4	0.6	mg				
		SPD004	SubProduct4	10	9	mg	Material6	MaterialGp6	6	mg	Supplier	Trade Secret	TRADE_SECRET	3	mg				
											Supplier	Copper Foil	7440-50-8	2	mg				
											Supplier	Glass Fiber	65997-17-3	1	mg				
							Material7	MaterialGp7	2	mg	Supplier	Silicon	7440-21-3	1.5	mg				
											Supplier	Brominated Flame Retardant, Tetrabromobisphenol A	79-94-7	0.5	mg				additive
							Material8	MaterialGp8	1	mg	Supplier	Au	7440-57-5	0.3	mg				
											Supplier	Ni	7440-02-0	0.7	mg				

Confidentiality Class	External Confidentiality Label	Document Type	Page
Open		User Guide	19 (23)
Prepared By (Subject Responsible)		Approved By (Document Responsible)	Checked
EDIAZHE Dianping Zheng D		BNEWCIK [Brad Yang]	
Document Number	Revision	Date	Reference
30/198 17-LXA 116 620 Uen	B	2026-03-27	

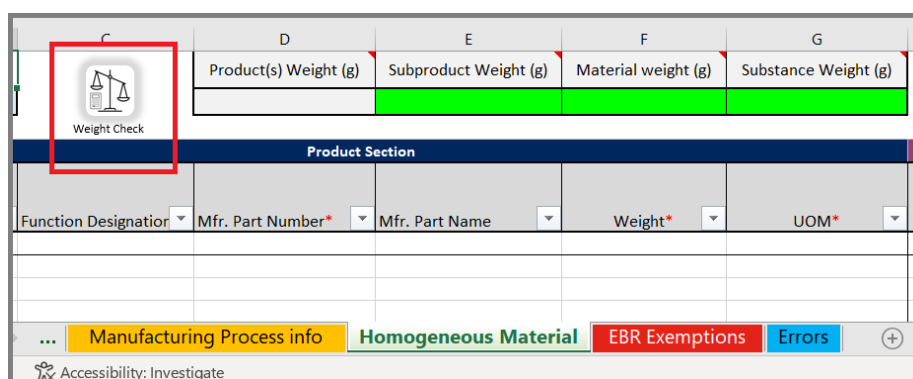


## 7. Validate the data

This step helps to Validate the declaration file to check if any errors exist.

### 7.1 Homogenous Materials and Weight calculation

The weight calculation feature will check and give some guidance to if the weight values add up. To use the weight calculation, click the “Weight check” button in Homogeneous Material page.



At the end of the calculation a pop up will appear with the sum of the weights. The weights are also populated in fields in the sheet.

If deviations exceed 1%, affected fields are highlighted in red.

Product(s) Weight (g)	Sub product Weight (g)	Material weight (g)	Substance Weight (g)
0.138	0.138	0.138	0.134

Ericsson Part Number*	Function Designation	Mfr. Part Number*	Mfr. Part Name	Weight*	UOM*	Sub Product Number*	Sub Product name	Number of Instances*	Weight
ABC 101 0608/1		ABC_TESTMP N_06081		138	mg	SPA001	SubPro1	1	
						SPB002	SubPro2	2	

Substance	Substance Identity / CAS*	Mass*	UOM*
Iron	7439-89-6	1	mg
Fiber Glass	65997-17-3	1	mg
Aluminium	7429-90-5	1.8	mg
Titanium	13463-67-7	0.2	mg
Iron	7439-89-6	0.7	mg
Copper	7440-50-8	9	mg

Correct discrepancies and recheck until all validations pass (indicated by green fields).



Product Section		Sub Product Section		Homogeneous Material List									
Ericsson Part Number*	Function Designation	Mfr. Part Number*	Mfr. Part Name	Weight*	UOM*	Sub Product Number*	Sub Product name	Number of Instances*	Weight	Substance	Amount	Mass*	UOM*
ABC 101 0608/1		ABC_TESTMP N_06081		138	mg	SPA001	SubPro1	1		Iron	7439-89-6	5	mg
						SPB002	SubPro2	2		Fiber Glass	65997-17-3	1	mg
										Aluminium	7429-90-5	1.8	mg
										Titanium	13463-67-7	0.2	mg
										Iron	7439-89-6	0.7	mg
										Copper	7440-50-8	9	mg

Sub Product Weight is: 0.138  
 Sum of Homogenous Materials is: 0.138  
 Sum of Substance weights is: 0.138

OK

Confidentiality Class	External Confidentiality Label	Document Type	Page
Open		User Guide	21 (23)
Prepared By (Subject Responsible)		Approved By (Document Responsible)	Checked
EDIAZHE Dianping Zheng D		BNEWCIK [Brad Yang]	
Document Number	Revision	Date	Reference
30/198 17-LXA 116 620 Uen	B	2026-03-27	



## 7.2 Other fields Validation

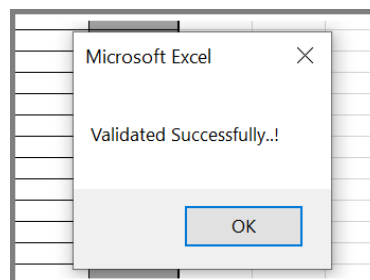
Click the "Validate Declaration" button on the homepage to check other fields.



If the validation failed, errors are displayed on the "Errors" sheet.

Sno	Error Name	Description	Sheet Name	Cell Value
1	MANDATORY DATA MISSING	Contact EMail Id Missing in Supplier Information	Basic	J15
2	MANDATORY DATA MISSING	Authorized Representative Contact EMail Id Missing in Supplier Information	Basic	M15
3	MANDATORY DATA MISSING	BGA/SMD/PCB value is not selected	Manufacturing Process info	C7

Fix all issues and revalidate until no errors are reported.



Confidentiality Class	External Confidentiality Label	Document Type	Page
Open		User Guide	22 (23)
Prepared By (Subject Responsible)		Approved By (Document Responsible)	Checked
EDIAZHE Dianping Zheng D		BNEWCIK [Brad Yang]	
Document Number	Revision	Date	Reference
30/198 17-LXA 116 620 Uen	B	2026-03-27	

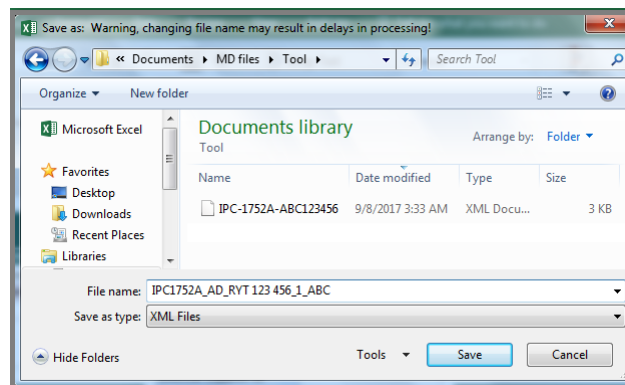


## 8. Generate the declaration

Once validation passes, generate the XML declaration by clicking “Generate Declaration” button in home page.



Choose a folder to save the file.



Click OK to the pop-up message. After generation, the declaration file can be found in selected folder.

**Attention:** The generation process might take several minutes. The file won't be generated properly until you receive this message. Please wait for the completion message to ensure the file is generated correctly.

Confidentiality Class Open	External Confidentiality Label	Document Type User Guide	Page 23 (23)
Prepared By (Subject Responsible) EDIAZHE Dianping Zheng D		Approved By (Document Responsible) BNEWCIK [Brad Yang]	Checked
Document Number 30/198 17-LXA 116 620 Uen	Revision B	Date 2026-03-27	Reference

