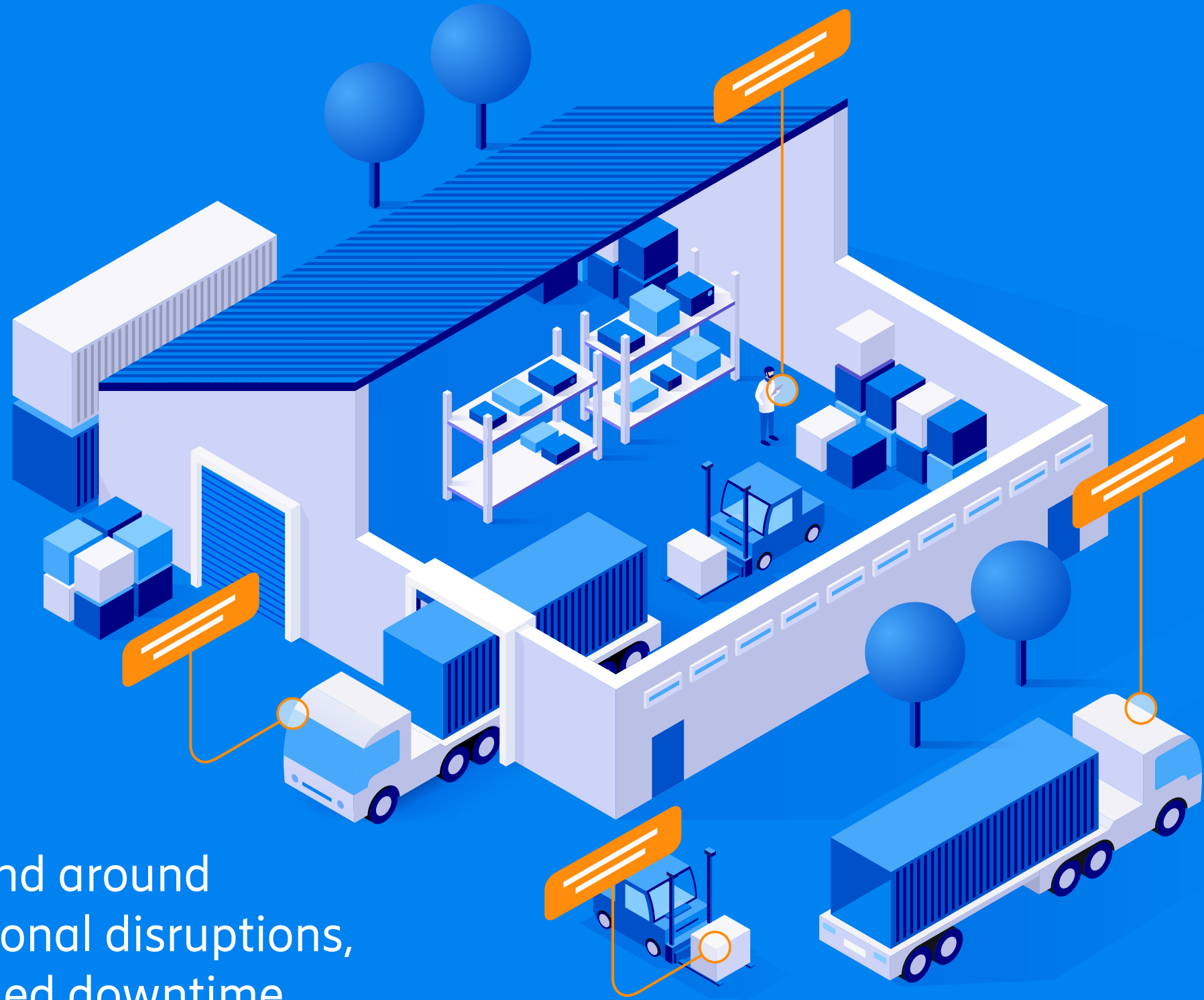
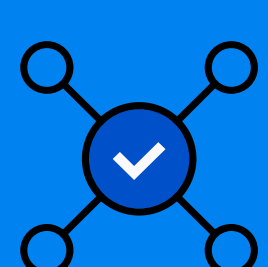


# Five key trends shaping 5G investments in warehouses



Network connectivity issues in and around warehouses can result in operational disruptions, reduced productivity and increased downtime, among other challenges. Yet most warehouse executives do not feel their network performance adequately supports their needs.



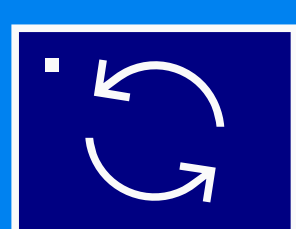
## Optimizing reliable indoor connectivity for greater productivity

Inadequate connectivity in and around warehouses can severely impact real-time operations like robotics, inventory management, order processing, and communication between automated systems and personnel. But 61% of the warehouse and distribution center executives surveyed expressed dissatisfaction with their overall network performance:

Warehouse executives report:



01



## Growing need to automate today's fulfillment centers

In the next 24 months, executives at smart warehouses and distribution centers expect to see increased automation levels across all facets of their operations, including a 1.7x increase in the number of tasks requiring automation.

54%

of all warehouse/DC tasks will have some level of automation over the next 24 months. Up from current level of 31%.

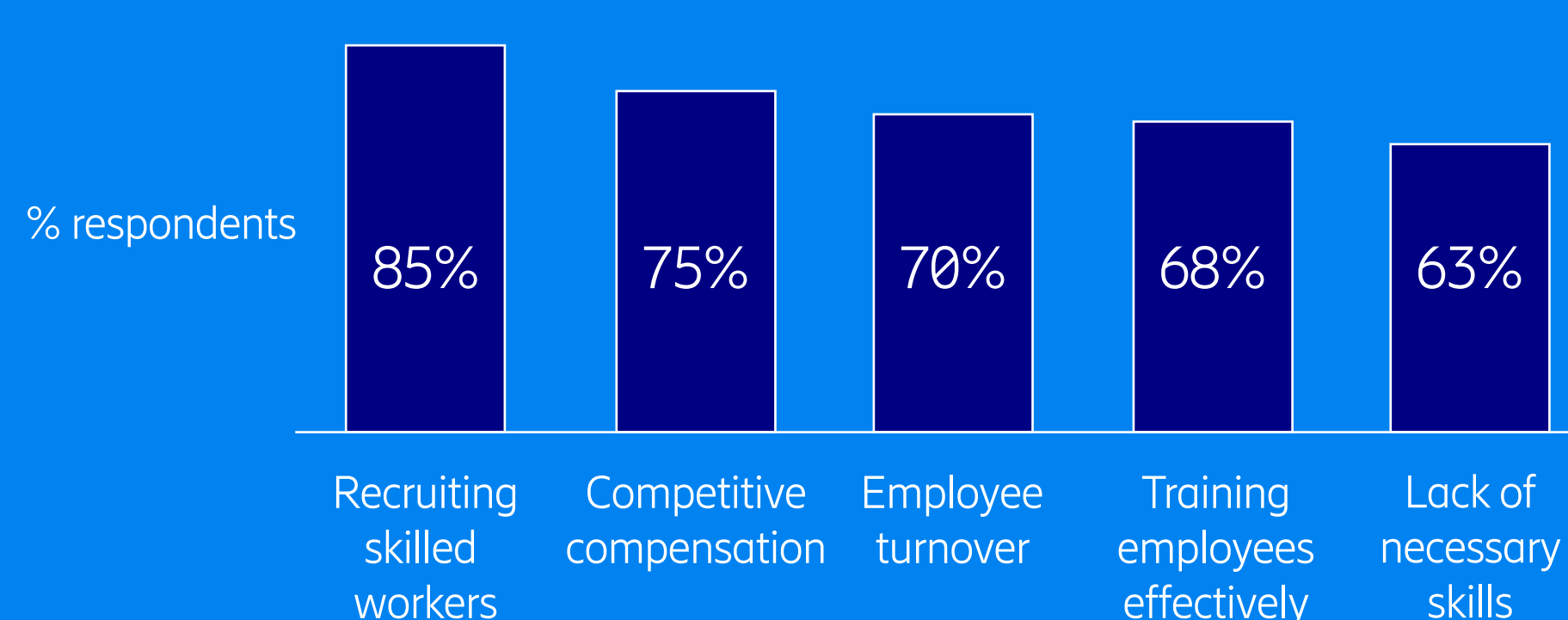
02



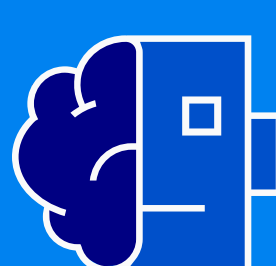
## Challenges in workforce management

Warehouses and distribution centers are increasingly turning to automation to solve workforce management challenges, such as recruiting, training and retaining skilled workers. Automation mitigates these issues while positioning companies for greater competitiveness and resilience.

Difficulty in managing the workforce



03

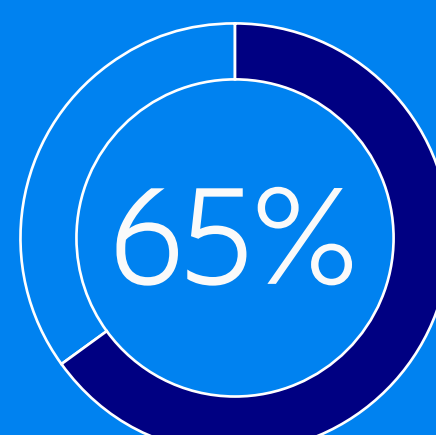


## Investing in advanced technology is imperative

The desire to automate manual, repetitive and labor-intensive tasks prompts many smart warehouses and distribution centers to deploy innovative, advanced technologies, such as Artificial Intelligence (AI), automation and robotics, that can speed up fulfillment with precision.

### Robotics

for picking and packing will be an area of investment for 25% of executives in the next 2 years.



of companies say their current network cannot support their needs over the next 2 years.

04



## Increasing throughput cost-effectively

Reliable private 5G network connectivity is the key to supporting higher productivity and throughput levels that meet customer expectations. Reliable connectivity is essential to supporting the automation, technology and infrastructure improvements that promote growth while managing operating costs.

78%

of companies rate managing operational costs as a top investment driver.

05



Learn more about how reliable, flexible private 5G networks benefit smart warehouses and distribution centers.

[Read the INCISIV 2024 State of Smart Distribution Study](#)